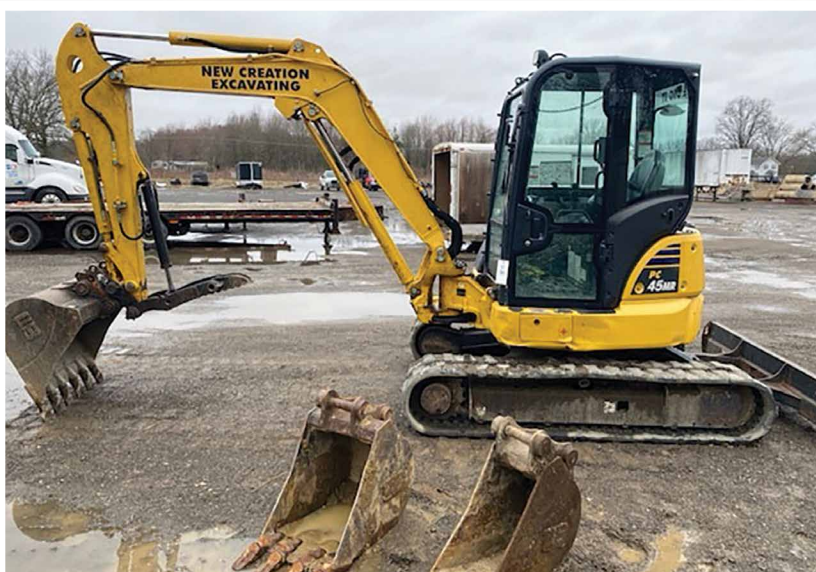


ABSOLUTE AUCTION

STARTS: FRIDAY, APRIL 19, 2024, 12:00 PM
ENDS. THURSDAY, APRIL 25, 2024, 5:30 PM



FARM
EQUIPMENT



ONLINE ONLY
Komatsu Excavators

AUCTION HIGHLIGHTS

- Cat Rubber Track Skid Loader
- Dodge Trucks
- Trailers
- Tools
- Landscape Pavers

Preview. Saturday, April 20, 2024, 10:00 AM-12:00 PM

Pickup. Tuesday, April 30, 2024, 10:00 AM-1:00 PM

325 SR 88,
BRISTOLVILLE, OH 44402

www.kikoauctions.com | 800.533.5456

Information is believed to be accurate but not guaranteed.
KIKO Auctioneers



Scan for auction details, including directions.

Absolute Auction.
All sells to the highest bidders online only

KOMATSU EXCAVATORS, CAT RUBBER TRACK SKID LOADER, TRUCKS, TRAILERS

One-owner Komatsu PC170LC excavator with Esco 18" & 48" dirt buckets, 28" steel tracks, 4292 hrs, hyd. coupler; one-owner Komatsu PC45MR rubber track excavator with hyd. thumb 12", 18", 36" dirt buckets and 42" ditch bucket, 4842 hrs and backfill blade; one-owner Cat 279D3 rubber track skid loader C/H/A, backup camera, hyd. disconnect, ext. hyd. 80" Cat bucket, 2 sp, 2,818 hrs; QT Cat 48" pallet forks; 2011 Dodge 2500 6.7 diesel, deleted 363K miles, 4X4, 4 door with 8.5' diamond-plate flatbed auto; 2003 Dodge 2500 4 door, 5.9L diesel, 283K miles on truck approx. 110K miles on motor with Reading 9' enclosed service bed, 4X4, auto; 2006 Ford 250 XL super duty, 2 WD, gas, 195K miles; Omaha 9' service bed off a chevy; 2017 Rampart 25-ton triaxle dual trailer 24' plus 6' with fold-up ramps; King Cobra 7X14 box trailer, double rear doors; 2017 P & J 14K# 8' X 23' tilt trailer; MGS 8' X 16' trailer; (2) Freuhaupt 40' aluminum side storage trailer; Royal 8' service bed off 2008 Ford with Maxon lift gate and hose reel; custom made 90-gal. tank with hose reel and pump

TOOLS, PVC FITTINGS, I-BEAMS, TRENCH BOX, WELDER

2" and 3" trash pumps; 8X10 trench box with spreader bars; Millermatic 242 mig welder; Dodge dually rims; trailer rims; oil hose reel; Delta 8" bench-top drill press; 24V charger; sewer pressure test kit; Milwaukee taps; Snap-On injector tester and Hall effect test set; Bosch rotary hammer; 4-ton porta power; 3400# 1" torque multiplier; 1/2" socket set; 3/4" porta socket set; Thermal Pak plasma cutter; bench-top grinder; wrenches; 500-gal. propane tank; diamond-plate truck toolbox; ice maker and Beverage Air cooler, as is; aluminum wire; assorted I-beams; pavers; assorted pipe fittings; laser level; Onan propane generator; Yale chain hoist; adj. post; 6X6 steel platform; 14' ladder rack; 16' crane/trolley frames and carrier

ONLINE TERMS

Visa, MasterCard, and Wire Transfer accepted. Wire transfers required on invoices over \$3,000. 7% buyer's premium on all sales. Information is believed to be accurate but not guaranteed. Multi par auction process may be used.



RANDALL L. KIKO
AUCTIONEER/REALTOR
 330.831.0174
 randallkiko@kikocompany.com



Information is believed to be accurate but not guaranteed.
 KIKO Auctioneers

